

222 Cavalcade Street, 77009-3213
P.O. Box 8768, Houston, Texas 77249-8768
Tel: (713) 692-9151 Fax: (713) 696-6205

Attention: J'Lynn Hare
Rumber Materials, Inc.
621 West Division Street
Muenster, TX 76252
P: 940-759-4181 / F: 940/759-4011

W/O. No.: RUM004-09-20-34576-1
P.O. No.:
Report Date: 9/21/2007

POINT LOADING AND DEFLECTION TESTS

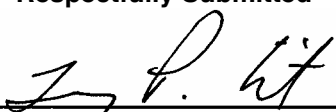
Each sample was secured into a mock-up trailer floor beam construction, with beams placed at 24" centers. A point load was applied over the board width, using a hydraulic ram, with a dial indicator used to record the amount of deflection at each load increment. The boards were loaded in 100 psi gauge increments; the table below lists the applicable load in lbs. for each psig increment. Both samples had a thickness of 2.375".

	Rumber with Single E-Glass Laminate	APITONG
Load (lbs)	Deflection (in.)	Deflection (in.)
930	0.150	0.013
1,490	0.263	0.020
2,110	0.353	0.027
2,710	0.475	0.035
3,340	0.589	0.041
4,050	0.775	0.048
4,660	0.996	0.055
5,360	1.066	0.062
5,990	1.191	0.068
6,720	1.326	0.076
7,470	1.550	0.083
8,160	1.716	0.088

Our letters and reports are for the exclusive use of the client to whom they are addressed and shall not be reproduced except in full without the approval of the testing laboratory. The use of our name must receive our written approval. Our letters and reports apply only to the sample tested and/or inspected, and are not indicative of the quantities of apparently identical or similar products. Material submitted to our metals department will be discarded after a period of 30 days unless otherwise directed.

Stork SWL, is an operating unit of Stork Materials Technology B.V., Amsterdam, The Netherlands, which is a member of the Stork group

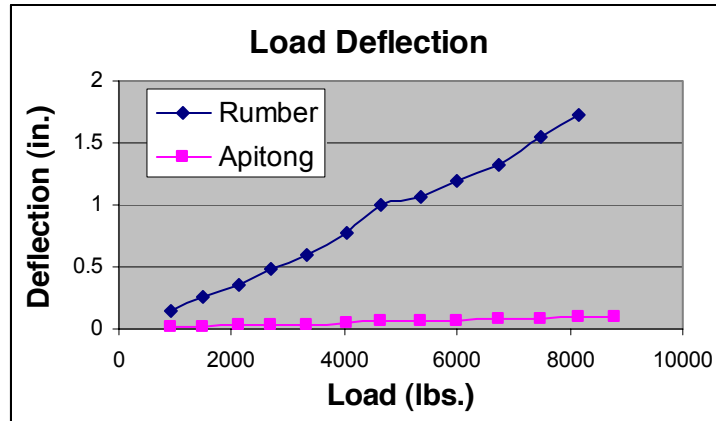
Respectfully Submitted


Terry Wilt
Manager, Product Evaluation

222 Cavalcade Street, 77009-3213
P.O. Box 8768, Houston, Texas 77249-8768
Tel: (713) 692-9151 Fax: (713) 696-6205

Attention: J'Lynn Hare
Rumber Materials, Inc.
621 West Division Street
Muenster, TX 76252
P: 940-759-4181 / F: 940/759-4011

W/O. No.: RUM004-09-20-34576-1
P.O. No.:
Report Date: 9/21/2007

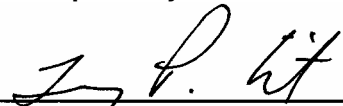


At a load of 8,160 lbs., the laminate began separating from the Rumber board, at which time the load was released. Prior to loading, the clearance from the Rumber board to the base of the loading frame was 19.5". After releasing the 8,160 lb. load, this same clearance measured 18.875", meaning a permanent set of 0.625" was observed on the Rumber board with the single E-Glass laminate backing. The Apitong board exhibited no permanent set after releasing the same load.

Our letters and reports are for the exclusive use of the client to whom they are addressed and shall not be reproduced except in full without the approval of the testing laboratory. The use of our name must receive our written approval. Our letters and reports apply only to the sample tested and/or inspected, and are not indicative of the quantities of apparently identical or similar products. Material submitted to our metals department will be discarded after a period of 30 days unless otherwise directed.

Stork SWL, is an operating unit of Stork Materials Technology B.V., Amsterdam, The Netherlands, which is a member of the Stork group

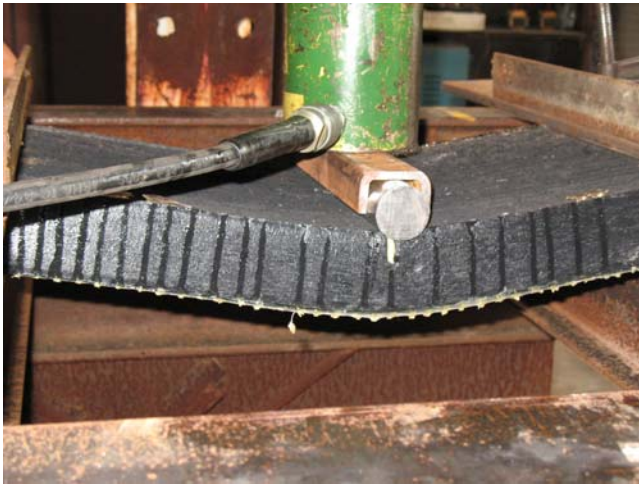
Respectfully Submitted


Terry Wilt
Manager, Product Evaluation

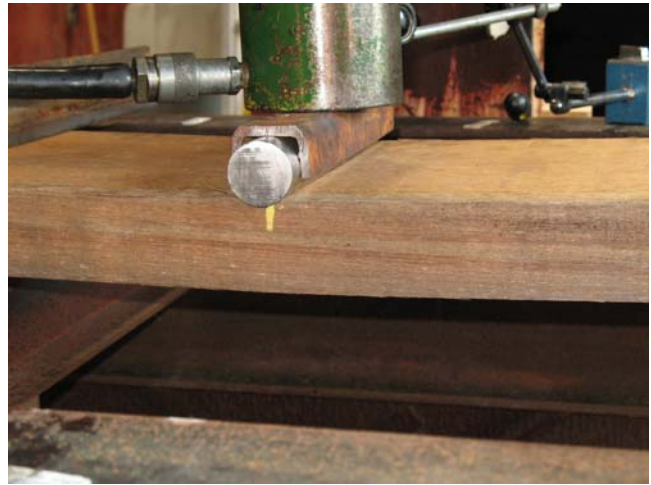
222 Cavalcade Street, 77009-3213
P.O. Box 8768, Houston, Texas 77249-8768
Tel: (713) 692-9151 Fax: (713) 696-6205

Attention: J'Lynn Hare
Rumber Materials, Inc.
621 West Division Street
Muenster, TX 76252
P: 940-759-4181 / F: 940/759-4011

W/O. No.: RUM004-09-20-34576-1
P.O. No.:
Report Date: 9/21/2007



1.716" deflection at 8,160 lbs.
Rumber board with E-Glass Laminate backing

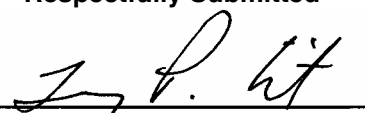


0.088" deflection at 8,160 lbs.
Apitong

Our letters and reports are for the exclusive use of the client to whom they are addressed and shall not be reproduced except in full without the approval of the testing laboratory. The use of our name must receive our written approval. Our letters and reports apply only to the sample tested and/or inspected, and are not indicative of the quantities of apparently identical or similar products. Material submitted to our metals department will be discarded after a period of 30 days unless otherwise directed.

Stork SWL, is an operating unit of Stork Materials Technology B.V., Amsterdam, The Netherlands, which is a member of the Stork group

Respectfully Submitted


Terry Wilt
Manager, Product Evaluation